

## Newtown Church of England Primary School



**Growing together  
in strength, love and wisdom,  
we shine.**

**Newsletter  
Friday 11<sup>th</sup> April 2025**

---

### Message from the Head



Thank you to all those who joined us in church this afternoon as we reach the Easter break following a busy but very successful spring term at Newtown.

A primary school usually gets inspected by Ofsted and SIAMS once every 4 or 5 years, so to get inspected by both bodies within two months is quite the challenge. However, I have been proud to share the findings of both inspections as to get independent recognition of all that is great at Newtown rewards the huge efforts which go into teaching the children every day.

Working in schools is, more than ever, a challenging job where workload and pressures are significant. Therefore, I must thank our wonderful staff team for their commitment and skill in the teaching of the children.

To support the children so expertly whilst bringing joy, adventure and excitement to learning – both inside and the outside the classroom – is what makes it so special.

Thank you also to our parents too for the support that our staff feel and for supporting the children in their education and helping them reach their potential.

Thank you all and now enjoy a much-deserved restful break before we all get back to it for the summer term!

## Newhampton Journey Day

♥ Love ♥

We had a brilliant day on Tuesday when we joined together with Welshampton and enjoyed a day of Love themed activities.

As small schools, it is good that we look for opportunities for the children to meet, socialise and make friends with a wider set of children. The collective events that we have as a Federation such as Journey Days and Trips and Visits allow those children those opportunities and it is lovely to see that interaction and building of new bonds and relationships.



As part of the day, the children did a sponsored 'Hedgehog Walk' which has raised £818.50 across the Federation for the Wildlife Trust. On behalf of the Trust, many thanks for your generosity.



**Executive Headteacher:** Mr Ben Crompton

**Address:** Newtown Church of England Primary School, Newtown, Shrewsbury SY4 5NU **Email:** [admin@newtown.shropshire.sch.uk](mailto:admin@newtown.shropshire.sch.uk) **Telephone:** 01939 233353  
**Website:** [www.newtowncofeprimary.co.uk](http://www.newtowncofeprimary.co.uk) **Instagram:** [Newtown\\_Primary\\_Wem](https://www.instagram.com/Newtown_Primary_Wem) **X:** [@NewtownCESchool](https://twitter.com/NewtownCESchool) **Facebook:** [Newtown C of E Primary School](https://www.facebook.com/Newtown_C_of_E_Primary_School)



### Fabulous Footballers

We took a mixed team of Y3/4 footballers to The Marches on Wednesday to take part in the annual tournament. As we have so much footballing talent at Newtown, we were able to take additional players to help out the Welshampton team who are more limited in Y3/4 footballers than at Newtown.

Our two teams did brilliantly and played with spirit, sportsmanship and spirit. The Newtown finished 3<sup>rd</sup> overall, with Eva W scoring both goals in the 3<sup>rd</sup> / 4<sup>th</sup> play-off, and our Newhampton team came 4<sup>th</sup> in their league.

All children were a credit to the school and should be very proud of their achievements.



### School Lunches

Summer Term menus and information has been shared and is attached at the bottom of this newsletter. The school lunches work on a 3 week rolling programme to give the children a variety of options to enjoy.

### Easter Raffle

Thank you for all your Easter egg donations over the last couple of weeks. I made the draw for the raffle outside school on Thursday at 3:15pm and it was lovely to see that most of our winners were able to collect their bumper Easter Egg Hampers at the end of the school day.

As always, a huge thank you to the Friends of Newtown for running the competition and raising more funds for the school.

We are delighted to announce that the raffle raised £260.33 for the school.

We have also had our grand total for the Escape Rooms event last week, which brought in £156.25.

Thank you to everyone who supported these great fundraisers.

### Goodbye and Good Luck Mrs Hidalgo

Mrs Hidalgo will today depart Newtown after accepting an opportunity to lead a two-form entry Early Years Foundation Stage (EYFS) provision closer to her home.

Many thanks to Mrs Hidalgo for all she has done for our EYFS provision over the previous 2 years and we wish her all the very best on the next step of her career. We now have strong foundations in EYFS from which we can continue to build.

Miss Wilds will now lead Hawk Class for 5 days a week and we welcome Miss Lottie Van Onselen who will lead Reception and Nursery for the summer term with continued support from Mr Roberts and Mrs Crone who will also join the school as a teaching assistant after Easter.

### Wem Carnival Royalty 2025

*Do you have what it takes to be Wem Carnival  
Royalty 2025?*

*Will you be aged 7 or over by 6th September 2025?  
If yes, then send us a letter, explaining why you'd like  
to be considered along with a photograph, your name  
age and contact details to [info@wemcarnival.co.uk](mailto:info@wemcarnival.co.uk) or  
drop off at Sweets & Treats to be entered into the  
ballot*

*Closing date for entries, midnight 31st May 2025*

**Executive Headteacher:** Mr Ben Crompton

**Address:** Newtown Church of England Primary School, Newtown, Shropshire SY4 5NU **Email:** [admin@newtown.shropshire.sch.uk](mailto:admin@newtown.shropshire.sch.uk) **Telephone:** 01939 233353  
**Website:** [www.newtowncofeprimary.co.uk](http://www.newtowncofeprimary.co.uk) **Instagram:** [Newtown\\_Primary\\_Wem](https://www.instagram.com/Newtown_Primary_Wem) **X:** @NewtownCESchool **Facebook:** [Newtown C of E Primary School](https://www.facebook.com/Newtown_C_of_E_Primary_School)

## Weekly Attendance Attend Today, Achieve Tomorrow...

Owl – 100% ★★ ★  
Hawk – 99% ★★ ★  
Kestrel - 98% ★  
Osprey - 98% ★  
Falcon – 97%

Weekly average: 98%



## Shining Stars of the Week

### Wisdom

*'Joyful is the person who finds wisdom, the one who gains understanding.'*  
Proverbs 3:13

### Owl Class

The whole class for working incredibly hard this term and making Mrs Hidalgo and Mr Roberts so proud.

### Hawk Class

Henry for amazing literacy and brilliant choices.

### Kestrel Class

Harriet for being a wonderful member of the class.

### Osprey & Falcon Class

Teddy for his remarkable progress in his maths arithmetic.



## Values Award

*as chosen by our Values Ambassadors*

### Strength

Ethan for coming to school with a broken arm.

### Love

Emma for being so kind and caring.

### Wisdom

Levi for making wise choices.

On behalf of all the staff and governors at Newtown,  
Happy Easter!

Have a wonderful Easter break!

Yours sincerely,  
Mr Crompton.

## Key School Dates

### April

28<sup>th</sup> April

Return to School

### May

1<sup>st</sup> May

5<sup>th</sup> May

12<sup>th</sup> – 15<sup>th</sup> May

16<sup>th</sup> May

23<sup>rd</sup> May

School Closed – Local Election

School Closed – Bank Holiday

Year 6 SATs Week

Newtown Colour Run

Break up for half term

### June

2<sup>nd</sup> June

8<sup>th</sup> – 13<sup>th</sup> June

Return to school

Phonics Screening Check

Year 4 Multiplication Check

27<sup>th</sup> June

Sports Day

1:15pm start

Parents Welcome

**Executive Headteacher:** Mr Ben Crompton

**Address:** Newtown Church of England Primary School, Newtown, Shrewsbury SY4 5NU **Email:** admin@newtown.shropshire.sch.uk **Telephone:** 01939 233353  
**Website:** www.newtowncofeprimary.co.uk **Instagram:** Newtown\_Primary\_Wem **X:** @NewtownCESchool **Facebook:** Newtown C of E Primary School



**SAMMY SWEETCORN SAYS...**  
'Enjoy your lunch!'



**WEEK 3**



	MONDAY	TUESDAY	WEDNESDAY	THURSDAY	FRIDAY
<b>OPTION 1</b>	Katsu Chicken Steak	Chicken Taco	Roast Beef Gravy & Yorkshire Pudding	Meatballs in Tomato Sauce	<b>PIZZA PARTY</b> A selection of pizza with various toppings
<b>OPTION 2</b>	Quorn Ball Sub (v)	French Bread Pizza (v)	Vegetarian Sausage, Gravy & Yorkshire Pudding (v)	Katsu Quorn Dippers (v)	
<b>JACKET POTATO BAR</b>	Jacket Potato with Tuna	Jacket Potato with Cheese & Beans (v)	Jacket Potato with Cheese (v)	Jacket Potato with Cheese & Beans (v)	Jacket with Cheese & Coleslaw (v)
<b>CARBS</b>	Rice or Diced Potatoes	Potato Wedges	Mashed & Roast Potatoes	Diced Potatoes or Pasta	Chips
<b>PUDDING</b>	Blueberry Pudding	Cookie Selection	Vanilla Iced Sponge	Chocolate & Pear Cake	<b>Fruity Friday</b> A selection of fruit based desserts



**ALL SERVED WITH...**  
A choice of two vegetables, fresh fruit & fruit yoghurts  
*Bob Snail* fruit rolls & strips or ice cream & sorbets



**SHIRE FRESH**  
services | dining



**SAMMY SWEETCORN SAYS...**  
'Enjoy your lunch!'



**WEEK 1**



	MONDAY	TUESDAY	WEDNESDAY	THURSDAY	FRIDAY
<b>OPTION 1</b>	Fish Selection	Beef Bolognese	Roast Gammon & Gravy	Chicken Tikka Wrap	<b>PIZZA PARTY</b> A selection of pizza with various toppings
<b>OPTION 2</b>	Enchiladas (v)	Vegetarian Sausage Roll (v)	Cheese & Potato Pie (v)	Quorn Dippers (v)	
<b>JACKET POTATO BAR</b>	Jacket Potato with Tuna	Jacket Potato with Cheese & Beans (v)	Jacket Potato with Cheese (v)	Jacket Potato with Cheese & Beans (v)	Jacket with Cheese & Coleslaw (v)
<b>CARBS</b>	Potato Wedges	Pasta or Potato Crunchies	Mashed & Roast Potatoes	Diced Potatoes	Chips
<b>PUDDING</b>	Lemon & Orange Drizzle Cake	Australian Crunch	Cornflake Cake	Toffee Apple Crumble & Custard	<b>Fruity Friday</b> A selection of fruit based desserts



**ALL SERVED WITH...**  
A choice of two vegetables, fresh fruit & fruit yoghurts  
*Bob Snail* fruit rolls & strips or ice cream & sorbets



**SHIRE FRESH**  
services | dining



**SAMMY SWEETCORN SAYS...**  
'Enjoy your lunch!'



**WEEK 2**



	MONDAY	TUESDAY	WEDNESDAY	THURSDAY	FRIDAY
<b>OPTION 1</b>	All Day Breakfast	Mac 'n' Cheese (v)	Roast Chicken Gravy & Stuffing	Chicken Tikka Masala	<b>PIZZA PARTY</b> A selection of pizza with various toppings
<b>OPTION 2</b>	All Day Veggie Breakfast (v)	Fish Finger Bap	Quorn Balls Gravy & Stuffing (v)	Country Veg Bake (v)	
<b>JACKET POTATO BAR</b>	Jacket Potato with Tuna	Jacket Potato with Cheese & Beans (v)	Jacket Potato with Cheese (v)	Jacket Potato with Cheese & Beans (v)	Jacket with Cheese & Coleslaw (v)
<b>CARBS</b>	Hash Browns	Potato Wedges	Mashed & Roast Potatoes	Rice	Chips
<b>PUDDING</b>	Banana Cake & Custard	Strawberry Mousse or Shortbread Selection	Waffles with strawberries & toffee sauce	Raspberry & Apple Cake	<b>Fruity Friday</b> A selection of fruit based desserts



**ALL SERVED WITH...**  
A choice of two vegetables, fresh fruit & fruit yoghurts  
*Bob Snail* fruit rolls & strips or ice cream & sorbets



**SHIRE FRESH**  
services | dining

**Executive Headteacher: Mr Ben Crompton**

**Address:** Newtown Church of England Primary School, Newtown, Shrewsbury SY4 5NU   
**Email:** admin@newtown.shropshire.sch.uk   
**Telephone:** 01939 233353  
**Website:** www.newtowncofeprimary.co.uk   
**Instagram:** Newtown\_Primary\_Wem   
**X:** @NewtownCESchool   
**Facebook:** Newtown C of E Primary School

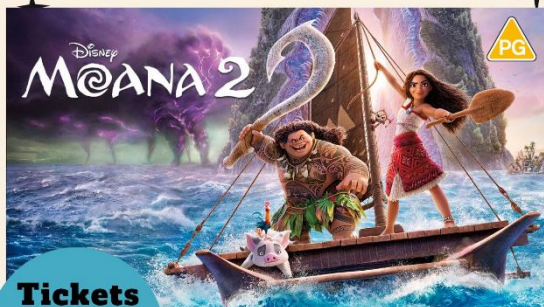


## EASTER SCHOOL HOLIDAY FILM

# MOANA 2

**WEDNESDAY  
23RD APRIL**

**FILM  
STARTS AT  
3PM**



### Tickets

Adult - £6  
Child - £4

**Booking essential  
Book online**

Cinema snacks & themed crafts

[www.shropshirehillsdiscoverycentre.co.uk](http://www.shropshirehillsdiscoverycentre.co.uk)

01588 676 060

School Road, Craven Arms, SY7 9RS

## Easter Holiday Activity

# PAPER MAKING

Mon 14th - Fri 18th April  
AND  
Mon 21st - Fri 25th April  
1pm - 2.30pm

Give scrap paper a new lease of life

Make a sheet of paper by  
recycling and  
repurposing scrap paper.  
Then make an envelope,  
newspaper plant pot or a  
secret message flower.



**£4.50 per child**

Recommended age 4 - 11 years  
Must be accompanied by an adult

**Booking essential - Book online**



Shropshire Hills  
Discovery Centre

the home of Grow Cook Learn

01588 676 060

[www.shropshirehillsdiscoverycentre.co.uk](http://www.shropshirehillsdiscoverycentre.co.uk)

## Spring Holiday Fun and Food in Shropshire

**SPACES STILL AVAILABLE**

# Book Now!

Across Shropshire, spaces are still available on the Spring HAF programme. Over the Spring holidays, eligible children and young people aged 4 (reception class age) to 16, are invited to attend holiday clubs happening across the county.

To find out more please go to:

[www.shropshire.gov.uk/haf](http://www.shropshire.gov.uk/haf)



**Executive Headteacher:** Mr Ben Crompton

**Address:** Newtown Church of England Primary School, Newtown, Shrewsbury SY4 5NU

**Email:** [admin@newtown.shropshire.sch.uk](mailto:admin@newtown.shropshire.sch.uk) **Telephone:** 01939 233353

**Website:** [www.newtowncofeprimary.co.uk](http://www.newtowncofeprimary.co.uk)

**Instagram:** [Newtown\\_Primary\\_Wem](https://www.instagram.com/Newtown_Primary_Wem)

**X:** @NewtownCESchool

**Facebook:** Newtown C of E Primary School